



Self-Propelled Telescopic Booms

S-40/S-45™

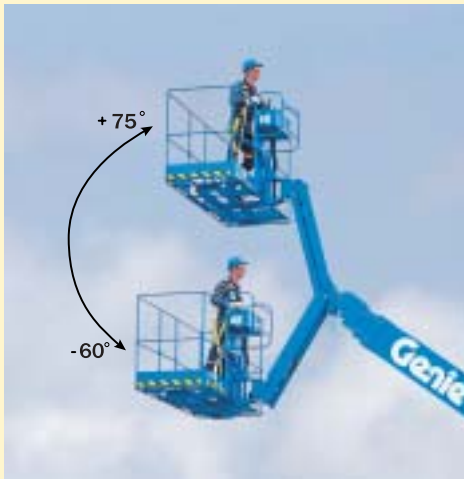
More of what
you need to
get the tough
jobs done.



Genie Industries

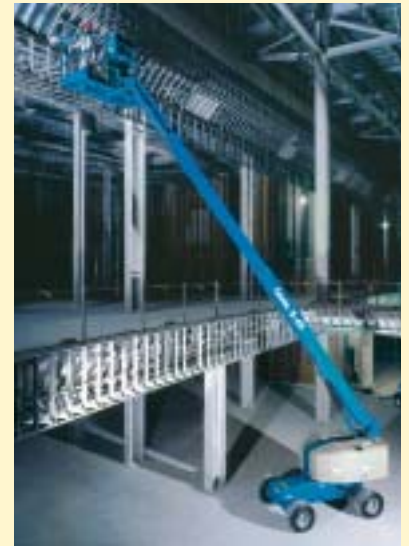
We give you features you won't find on other

Genie's S-40 and S-45 feature faster lift speeds, more powerful engine options, and low-profile chassis covers offering the industry more of what it needs to get the job done. Choose the Genie S-40 boom, with 46 ft (14.2 m) of working height, or the S-45, with an additional 5 ft (1.52 m) articulating jib boom. Customize your boom with many option packages.



S-45 Out-and-Up Articulating Jib Boom

This special option gives you an additional 5 ft (1.52 m) of horizontal reach for a total of 36 ft 8 in (11.2 m). The S-45 jib boom gives you flexibility too – 135° of working range. You not only access 75° above horizontal, but you can get to 60° below horizontal.



Standard Features

Proportional Controls

Allow smooth operation and easy positioning.

160° Hydraulic Platform Rotator

Gives you precise placement without repositioning the boom.

Easily Accessible Components

The swing-out engine tray and easy-to-understand electrical system simplify routine maintenance.

Positive Traction Drive

Full-time positive traction system on both 4x2 and 4x4 models.

Drive Enable System

Informs operator when the drive and steer functions will move opposite the controller movements.

Low-Profile Chassis Covers

Provide high visibility for the operator while unit is in stowed position.

Platform Controls

Large, simple to use controls for easy operation.

Transportability

The S-40 and S-45 are designed to load and unload easily from transport vehicles.

Increased Lift Speed

The capability to operate multiple functions simultaneously results in maximum lift speed. The S-40 elevates from the ground to full height in just 40 seconds.

Powerful Engine

The Ford LRG 425 Electronic Fuel Injection Gas/LPG 82 hp (61 kw) engine is more powerful with enhanced performance in high altitude and cold weather environments. The fuel-injection system requires less service than carburetor systems.



stick booms.



Easily customized to meet your needs:

Engine Options

- Ford LRG 425 EFI
- Gas/LPG 82 hp (61 kw)
- Deutz Diesel 56 hp (42 kw)
- Deutz Diesel 36 hp (27 kw)
- Perkins Diesel 60 hp (45 kw)

Platform Options

- Standard: Steel 6 ft (1.83 m)
- Optional: Steel 8 ft (2.44 m)

Drive Options

- 4x2 – two wheel drive
gradeability up to 30%
- 4x4 – four wheel drive
gradeability up to 40%

Axle Options

- Oscillating axle
- Non-oscillating axle

Tire Options

- Rough terrain, air or foam filled.
- Rough terrain non-marking (4x4 only)
- High floatation turf tire (4x4 only)

Terrain Tracking Active Oscillation System

This revolutionary system automatically senses the terrain and adjusts the axle position based on ground conditions. The oscillating axle allows you to drive on uneven ground with the turntable rotated up to 90°. It provides an amazingly smooth ride even when the platform is raised.



Loeering Tracking Systems

Loeering offers two specially designed tracking systems for the S-40 and S-45. The tracks, available in both rugged steel and soft-bottom urethane, along with a wheel and idler system, give the lifts more traction and floatation in adverse conditions. The tracks attach quickly and easily with a customized intallation tool. After initial intallation, the drive-on design allows reinstallation in less than 30 minutes. The tracks are fully adjustable and rebuildable, making them the ultimate value.



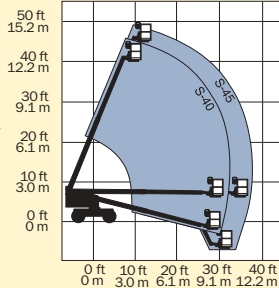
S-40/S-45

Standard Features

- S-40 has 46 ft (14.2 m) working height
- S-45 has 51 ft (15.7 m) working height
- S-40 has 31 ft 8 in (9.7 m) horizontal reach
- S-45 has 36 ft 8 in (11.2 m) horizontal reach
- 500 lb (227 kg) lift capacity
- Oscillating axle system on 4x4 models
- Dual fuel (Gas/LPG) or diesel engine options
- Hall effect joystick controllers
- Fully proportional platform controls with ramp up/down feature
- Hydraulic platform rotation
- 360° continuous turntable rotation
- 12V DC auxiliary power
- Fuel select switch on platform and ground control panels (Gas/LPG models)

- Closed-loop hydrostatic drive
- Positive traction drive
- Drive enable system
- Self-leveling platform
- Locking turntable covers
- Anti-restart engine protection
- Auto engine fault shutdown
- AC wiring to platform
- Wire braided hose
- Tilt alarm
- Horn
- Hour meter

Range of Motion

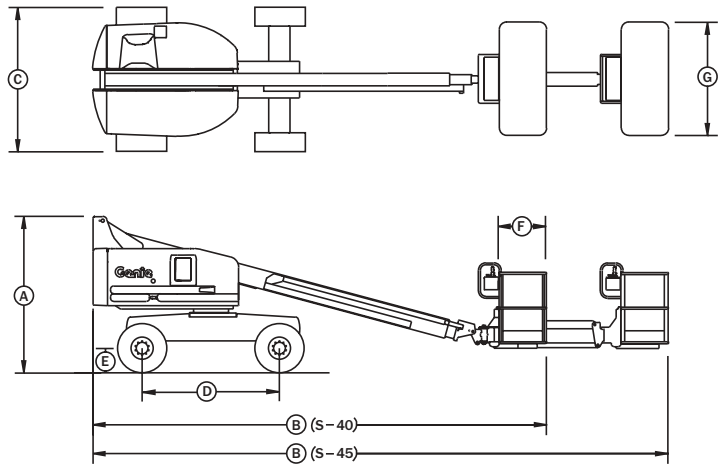


Options and Accessories

- Alarm package
- Cold start packages
- 2500 or 3000 watt AC generator
- 8 ft (2.44 m) steel platform
- Platform swing gate
- Air line to platform
- Platform rail pinch guard
- Platform work lights
- Lockable platform control box cover
- Tool tray
- Fluorescent tube caddy
- Hostile environment packages
- Additional LPG tank
- GS/LPS rating for Ford engine powered machines
- Foam-filled tires
- Tow package
- Driving lights
- Weld lead to platform
- Spark arrester (Ford and Deutz)
- Scrubber/spark arrester (Deutz)
- Hydraulic oil cooler
- Rocker steer

Standards Compliance

- ANSI/SIA A92.5
- CAN3-B354.4-M82
- CE
- AS 1418.10



Specifications

Model	S-40 US	Metric	S-45 US	Metric
Working height max*	46 ft	14.2 m	51 ft	15.7 m
Platform height max	40 ft	12.2 m	45 ft	13.7 m
(A) Height - stowed	8 ft 2 in	2.5 m	8 ft 2 in	2.5 m
(B) Length - stowed	24 ft 3 in	7.4 m	27 ft 10 in	8.5 m
Length - transport Jib tucked under	—	—	22 ft 4 in	6.8 m
(C) Width	7 ft 6 in	2.3 m	7 ft 6 in	2.3 m
(D) Wheelbase	7 ft 3 in	2.2 m	7 ft 3 in	2.2 m
(E) Ground clearance	12 ½ in	32 cm	12 ½ in	32 cm
(F) Platform length: 6 ft	30 in	76 cm	30 in	76 cm
8 ft	36 in	91 cm	36 in	91 cm
(G) Platform width: 6 ft	72 in	1.83 m	72 in	1.83 m
8 ft	96 in	2.44 m	96 in	2.44 m
Horizontal reach max	31 ft 8 in	9.7 m	36 ft 8 in	11.2 m
Lift capacity	500 lb	227 kg	500 lb	227 kg
Turning radius – outside	15 ft 8 in	4.78 m	15 ft 8 in	4.78 m
Turning radius – inside	6 ft 8 in	2 m	6 ft 8 in	2 m
Turntable rotation	360° continuous		360° continuous	
Turntable tailswing	34 in	86 cm	34 in	86 cm
Power source	Ford LRG 425 EFI Gas/LPG 82 hp (61 kw) Deutz Diesel 56 hp (42 kw) Deutz Diesel 36 hp (27 kw) Perkins Diesel 60 hp (45 kw)			
Platform rotation	160°	160°	160°	160°
Auxiliary power unit	12V DC		12V DC	
Tires – RT Lug	12-16.5 NHS		12-16.5 NHS	
Tires – Ribbed (4x2 front)	12.5 L-16 SL		12.5 L-16 SL	
Hydraulic tank capacity	45 gal	170 litre	45 gal	170 litre
Fuel tank capacity	33 gal	125 litre	33 gal	125 litre
Weight**	11,650 lb	5,284 kg	14,790 lb	6,709 kg
S-40/S-45	4x2		4x4	
Drive speed, stowed Gas/LPG models	4 mph	6.4 km/h	3.5 mph	5.6 km/h
Drive speed, stowed Deutz Diesel models	3.8 mph	6.1 km/h	2.8 mph	4.5 km/h
Drive speed, raised or extended	0.68 mph	1.1 km/h	0.68 mph	1.1 km/h
Gradeability – stowed	30%		40%	

* The metric equivalent of working height adds 2 m to platform height. U.S. adds 6 ft to platform height
** Weight will vary depending on options and/or country standards.

Distributed By:

Genie Industries

GENIE UNITED STATES

18340 NE 76th Street
P.O. Box 97030
Redmond, Washington 98073-9730
Telephone (425) 881-1800
Toll Free in USA/Canada 800-536-1800
Fax (425) 883-3475
<http://www.genieindustries.com>

GENIE UNITED KINGDOM

The Maltings, Wharf Road
Grantham
Lincolnshire NG31 6BH
England
Telephone: +44 (0)1476 584333
Fax: +44 (0)1476 584334
<http://www.genieindustries.com>